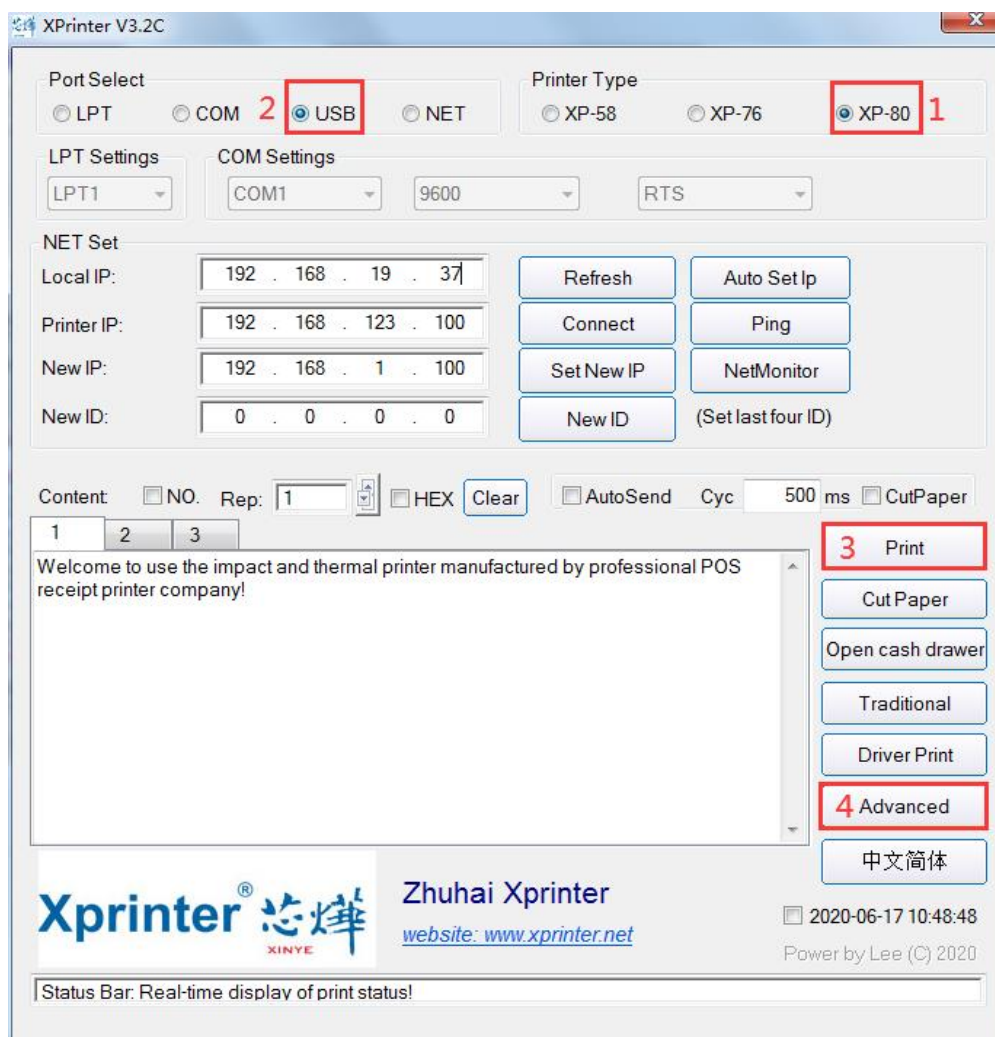


## Settings of the Bluetooth Printer

1、Open the file—“XPrinterV3.2C” in the folder named as “Tools” in the optical disk.

Then start XPrinter software and follow the steps to set the printer. See the picture followed.



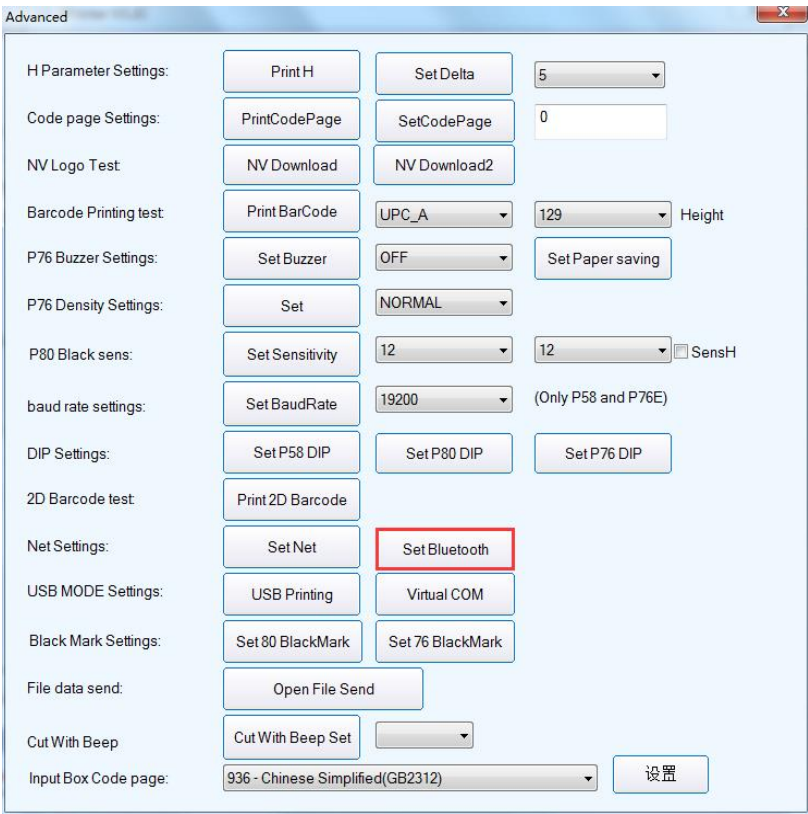
“1” Choose Printer Type: “XP-80”

“2” Choose “USB” Port

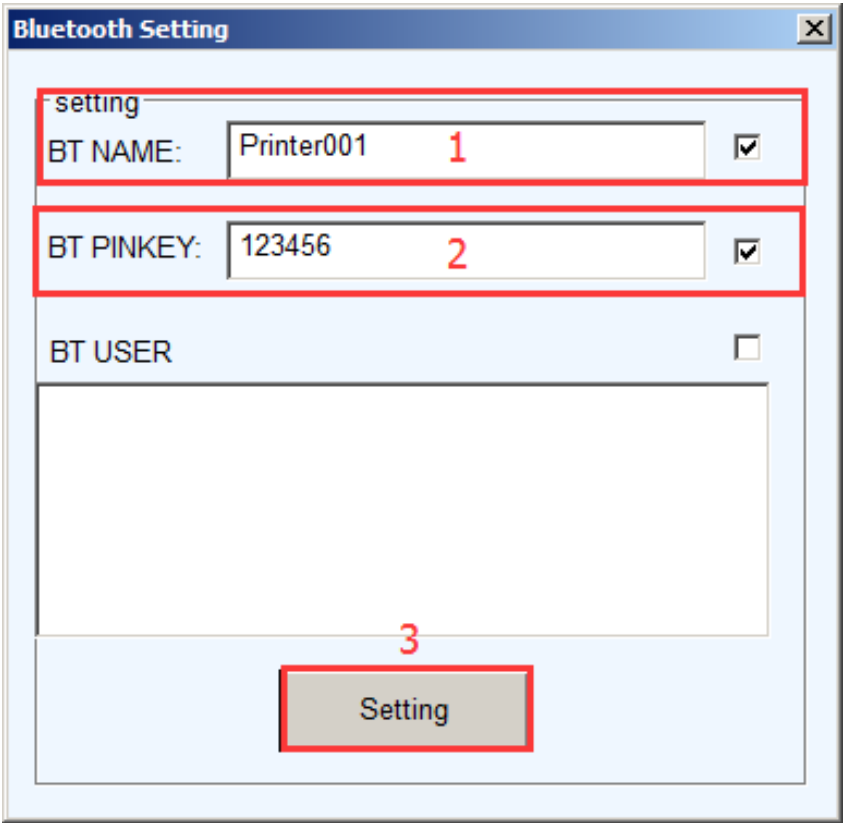
“3” Click the “Print” to test whether the printer is working.

“4” After doing the above settings, the printer is tested to be working. Then click the “Advanced”, and the corresponding window could be popped up.

2、Click the “Advanced”. Then the corresponding window is popped up. See the picture:



3、Click the “Bluetooth Set”, and follow the steps to set up the Bluetooth information. See the following pictures:



- “1” Set up the Port name of the Bluetooth Printer (the Factory Default BT NAME is “Printer001”)
- “2” Set up the Password of the Bluetooth Printer (the Factory Default BT PINKEY is “123456”)
- “3” After doing the above settings, click “Setting”, and then finished the settings of Bluetooth printer Parameters.

More specific details please refer to “Wireless Thermal Receipt Printer (User Manual)”.

