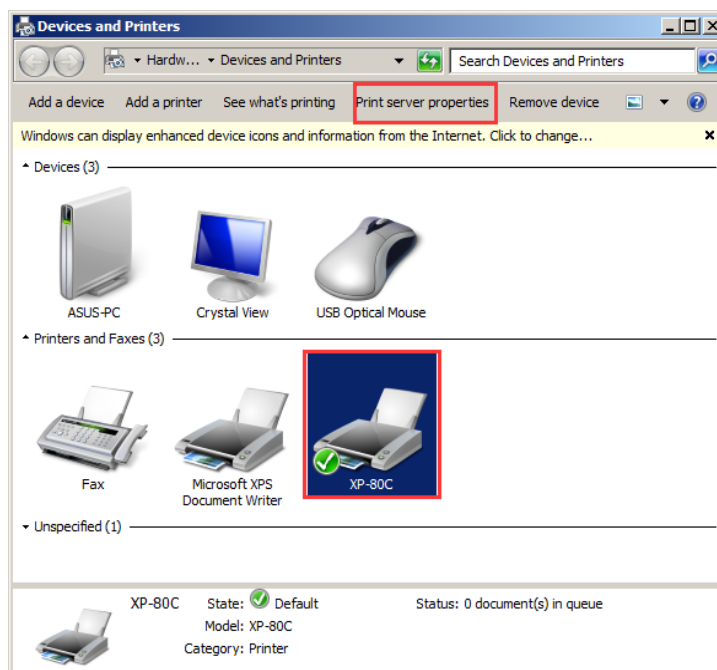


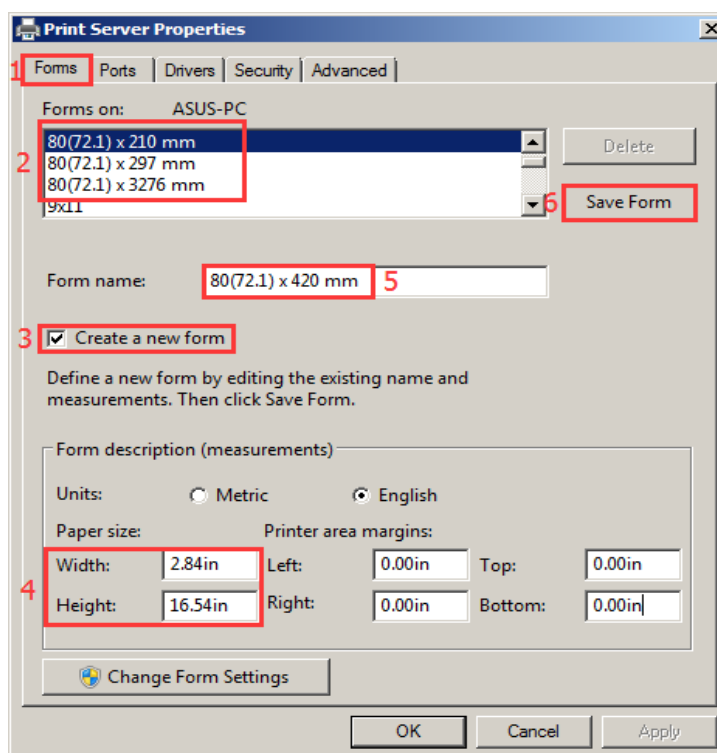
Customize the Paper's Specifications

According to personal needs, clients could alter the paper's size by their own. Take WIN7 operating system for an example. The specific operations are as follows.

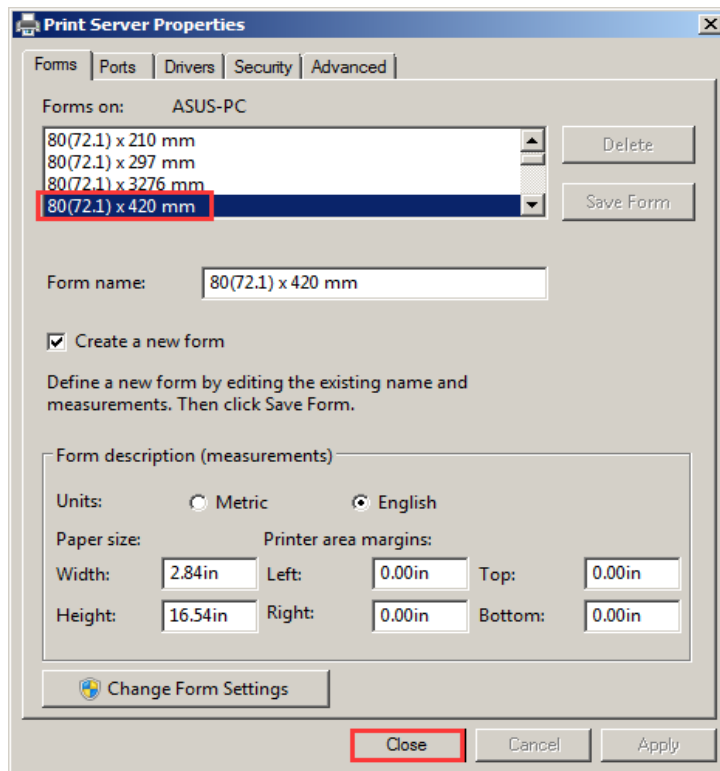
1. Click the icon of the installed printer under the “Devices and Printers”. Then choose the “Printer Service Properties”.



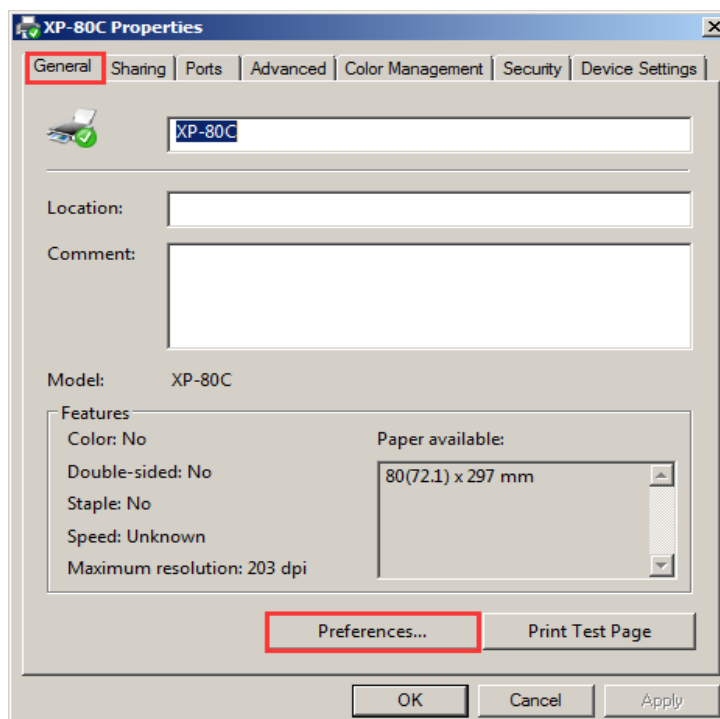
2. After the menu popping up, firstly find the format of the paper's specifications which has been installed through the printer driver. Next, some operations could be taken as the following picture shown.



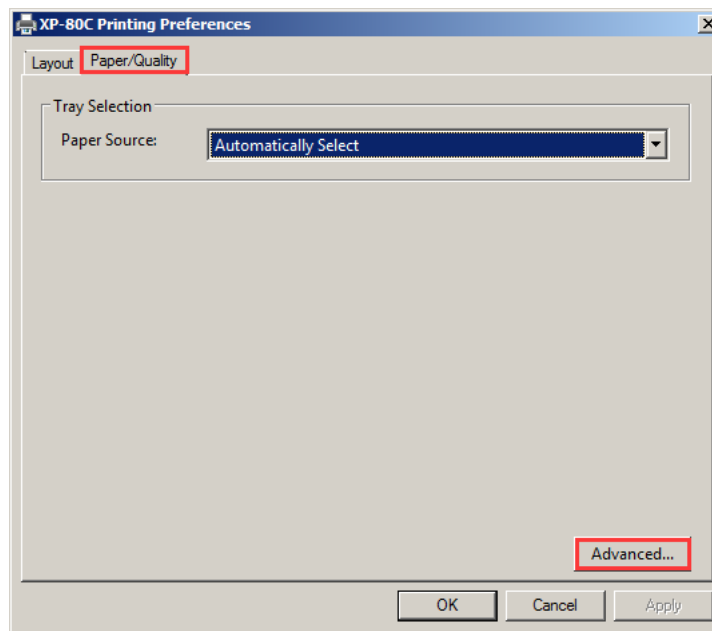
- After finishing the above settings, click the “Save Menu” button. The Form’s name which has already been set up could be found in the tab of “Form”. As the following picture shown. Then, close the dialog box.



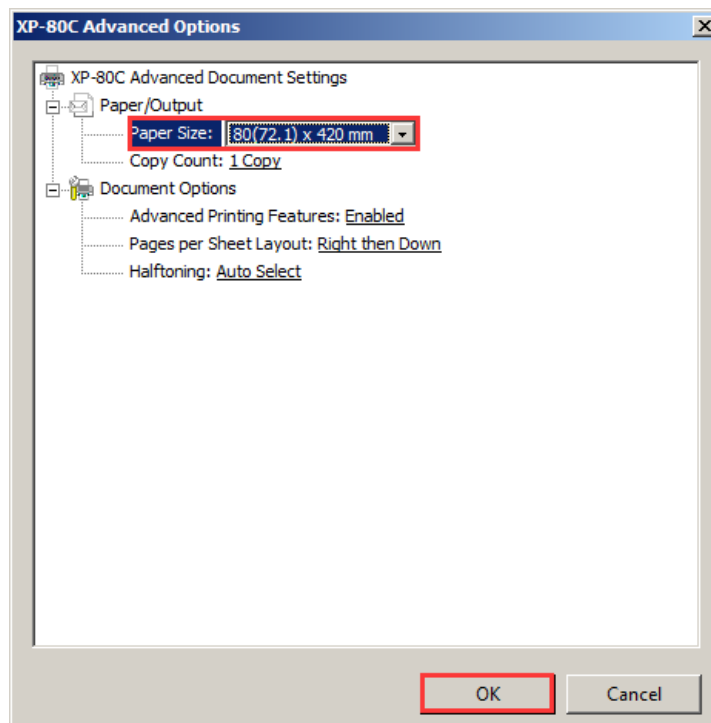
- Enter “Devices and Printers”, and press the right mouse on the option of “Printer Properties”. After the dialog box popping up, choose the “Preferences” option.



5、 “Paper/Quality”—“Advanced”. See the following picture.



6、 Find the new paper size which was set in the “Paper Specifications”. Press the “OK” button and close the dialog box. See the following picture.



7、Return to the tab of “Device Settings” and select “Paper Specifications”. Then click the “OK” button. See the following picture.

