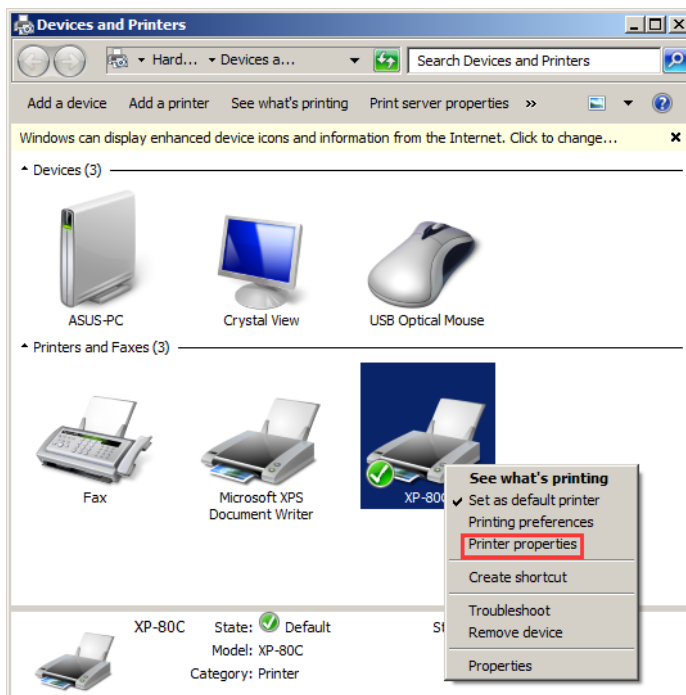


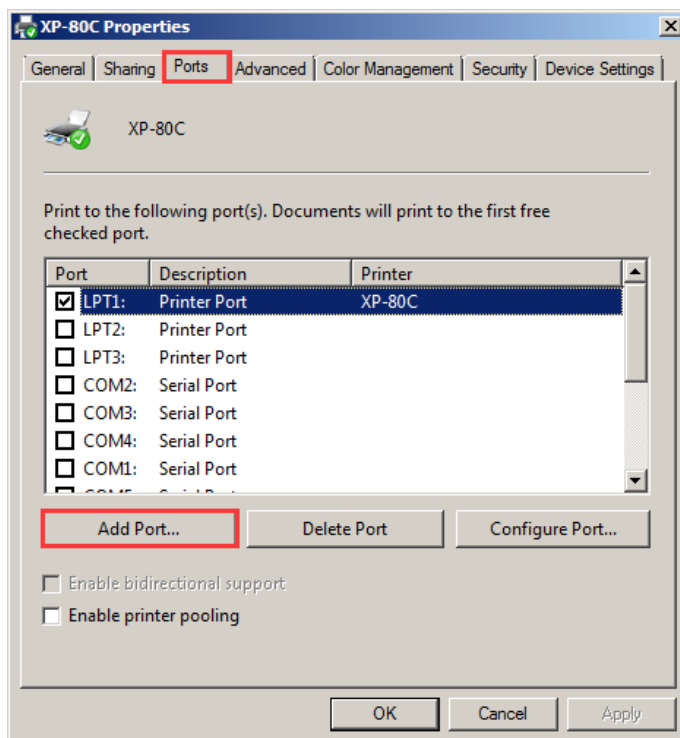
Add IP Port When Using Network Interface Machine

When finishing the installation of the printer's driver, it demands to add an IP Port to the Driver when using Network Interface Machines. Take WIN7 operating system for an example. The specific operations are as follows:

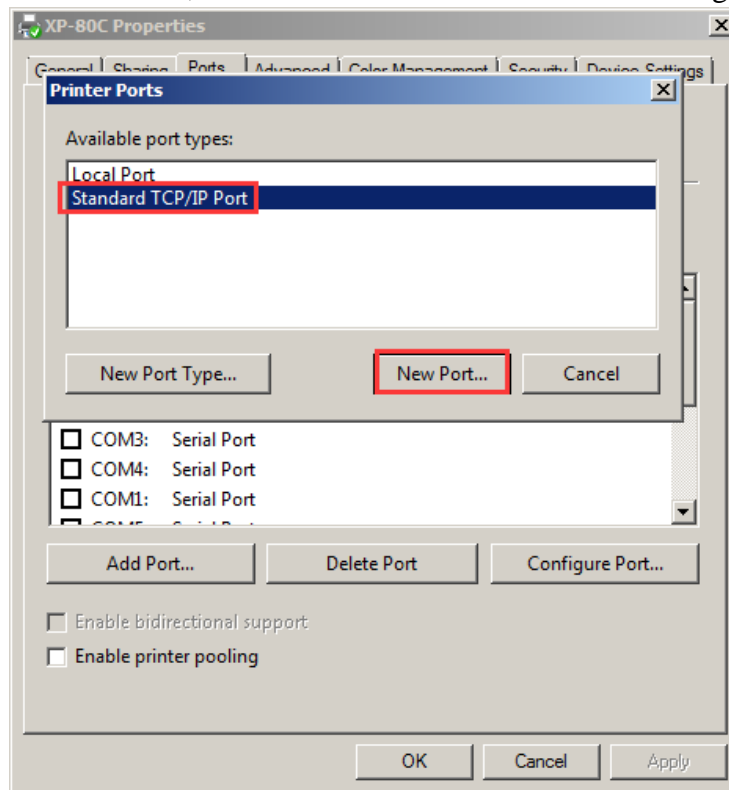
1、Find the icon of the driver that has already been installed. Right click the “Printer Properties”. See the following picture.



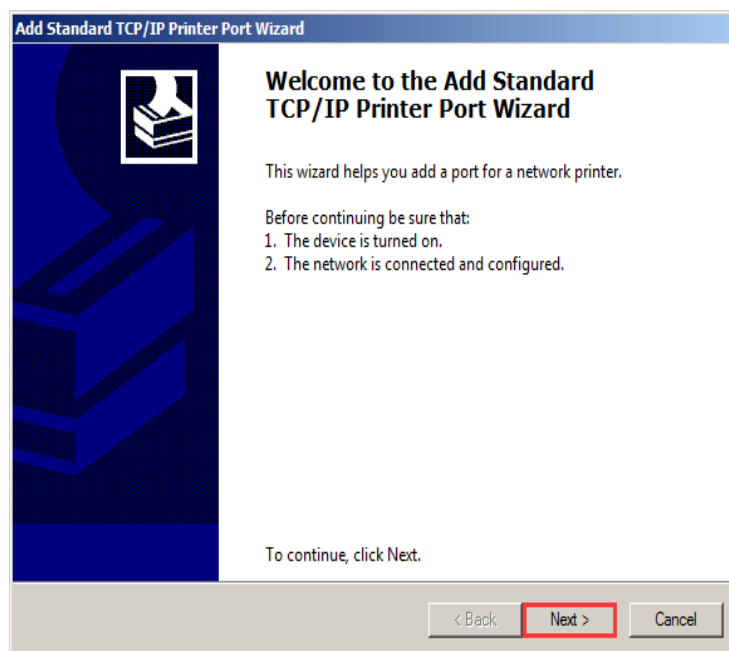
2、Click “Ports”, and choose “Add Port” option. See the following picture.



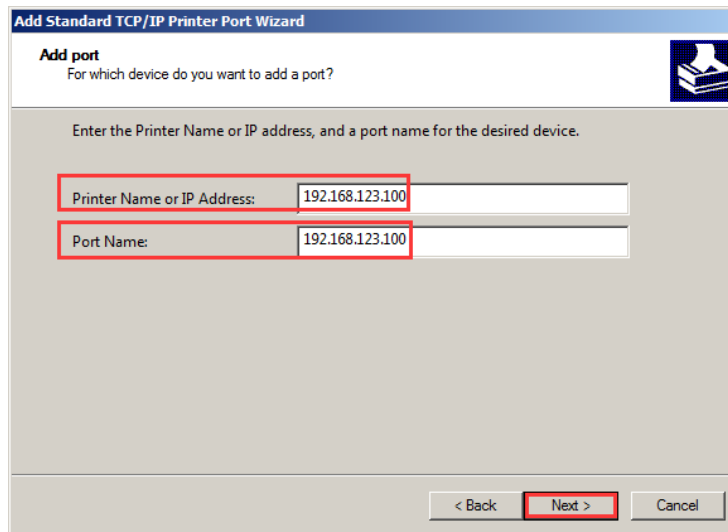
3、Choose “Standard TCP/IP Port”, then click “New Port”. See the following picture.



4、Click “Next Step”.



5、Input the current IP address of the printer. The Port's name is generated automatically. See the following picture.



Add Standard TCP/IP Printer Port Wizard

Add port
For which device do you want to add a port?

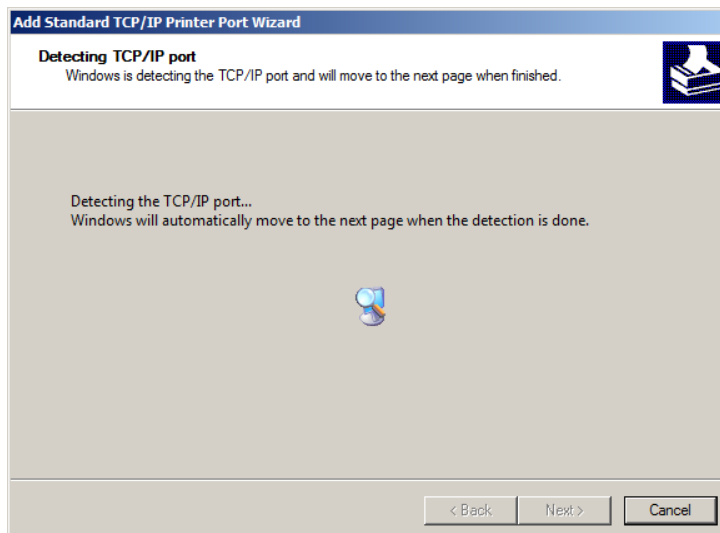
Enter the Printer Name or IP address, and a port name for the desired device.

Printer Name or IP Address: 192.168.123.100

Port Name: 192.168.123.100

< Back **Next >** Cancel

6、Wait about 5 to 10 seconds to detecting the port. See the following picture。



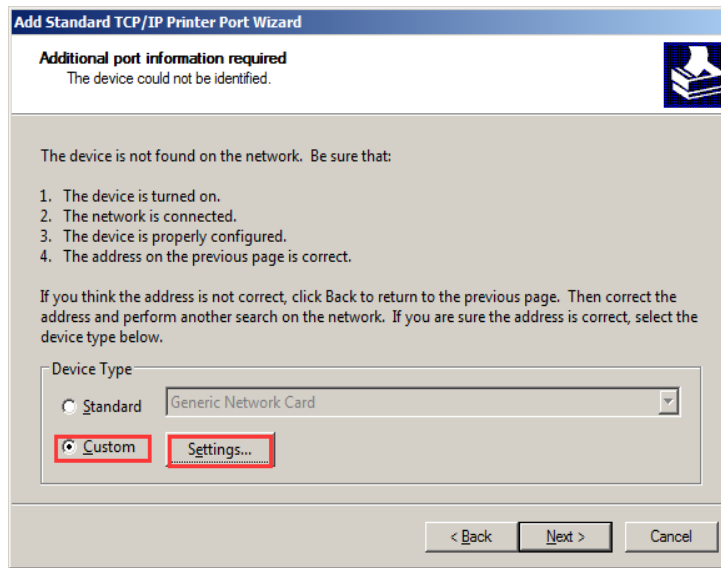
Add Standard TCP/IP Printer Port Wizard

Detecting TCP/IP port
Windows is detecting the TCP/IP port and will move to the next page when finished.

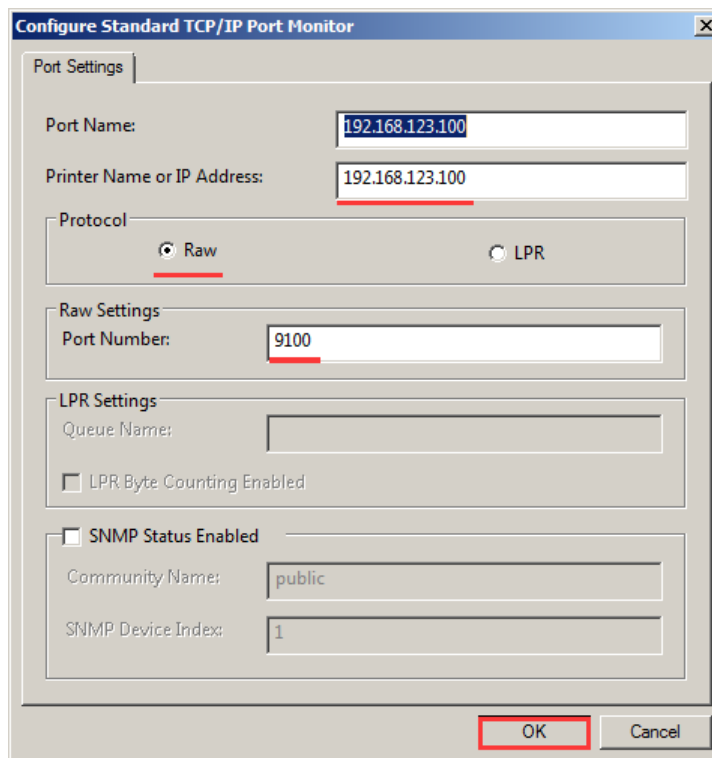
Detecting the TCP/IP port...
Windows will automatically move to the next page when the detection is done.

< Back **Next >** Cancel

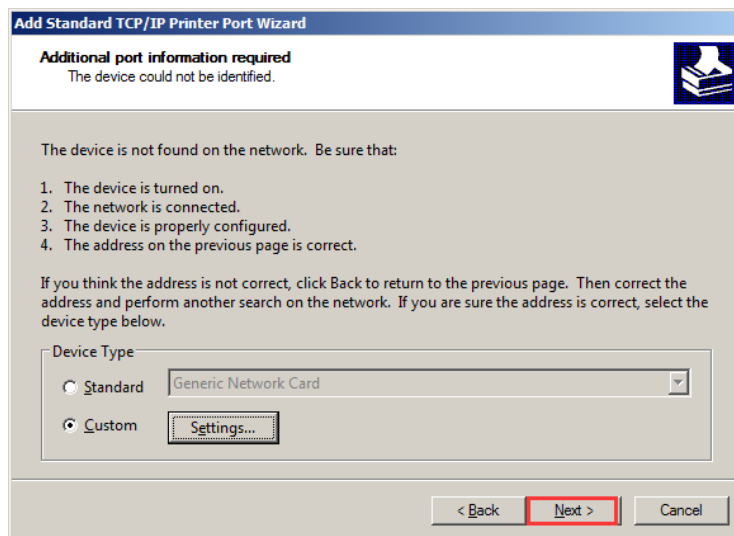
7、Choose “Custom”, then click “Settings”. See the following picture.



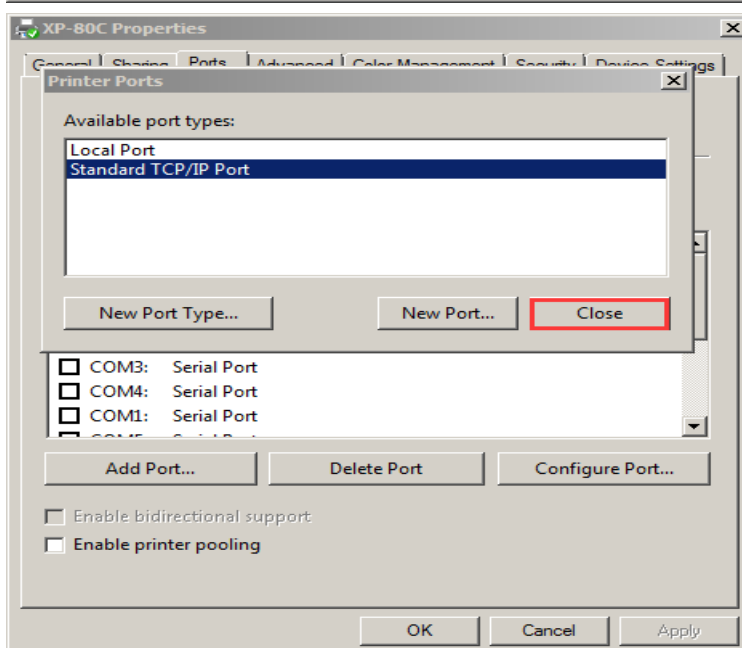
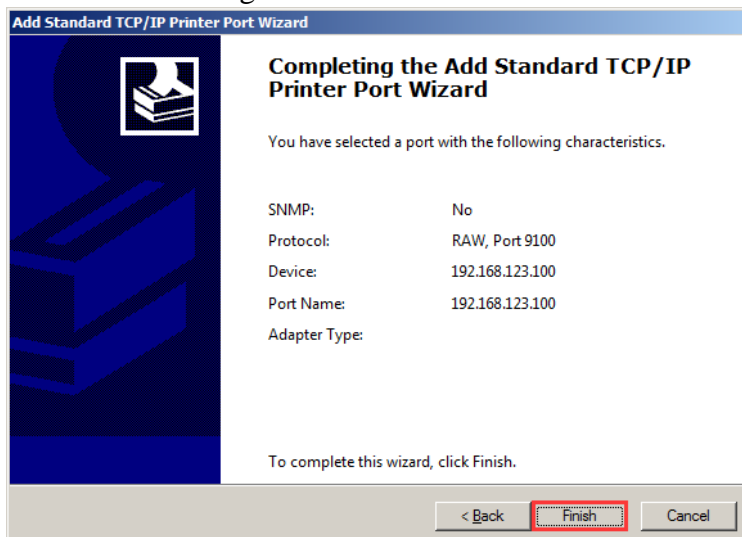
8、Check the parameters of “Protocol” and “Port number”. Then click the “OK” button as the following picture shown.



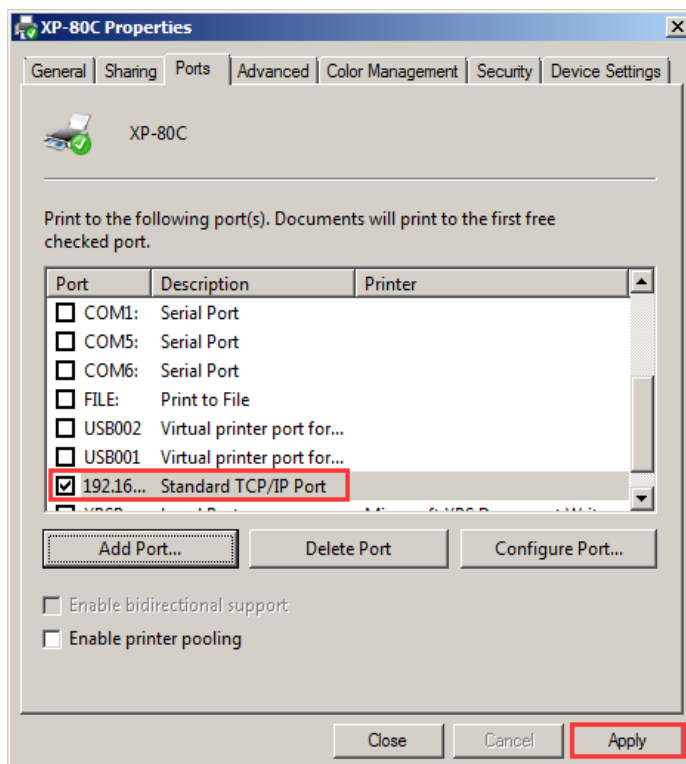
9、Click“Next Step”.



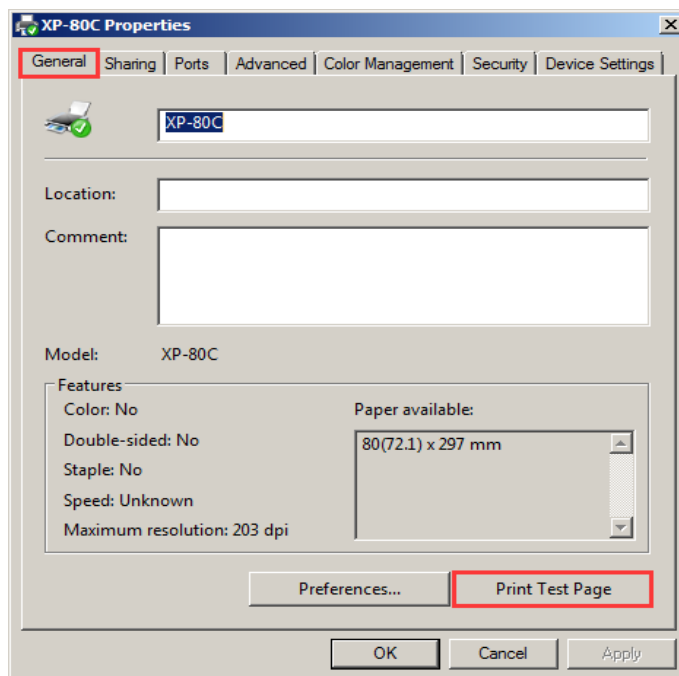
Choose “Finish”—close the “Add Dialog Box”.



11、 After finishing the above steps, a just added IP port could be generated in the driver's port. Click the “Apply” button. See the following picture.



12、 Choose the “General” tab, and click “Print the Test Page” button. See the following picture.



If there is a test page printed by the printer, it means that the Driver's installation has been finished.

