

# Usb to parallel&serial cable User's Manual


## Features

The USB to parallel&serial cable provides the following features:

- USB specification 1.1 compliant
- Low power
- Single serial port
- Supports 8,7,6&5 data widths
- Supports 1.5 and 2 stop bits
- Supports Even, Odd,Mark, Space& None Parities
- Single printer port interface
- 2KV in-circuit ESD protection for lower cost of external components
- Compatible with USB 2.0 and 1.1
- Supports wake-on-line & power management function
- No IRQ, DMA, I/O Address resources required
- Hot swappable
- Easy plug & play
- Serial high speed transfer up to 230400 bps
- Parallel port support ECP/EPP/SPP mode
- Parallel transfer speed up to 1.5 MB/sec

## System Requirements

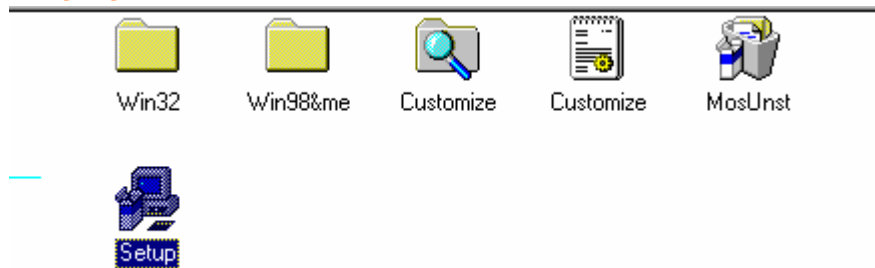
Before you use the USB to parallel&serial cable, make sure your computer is an IBM PC-compatible with the following minimum system requirements:

- Intel-compatible 486DX-66 MHz CPU or higher
- One standard 4-pin USB port (with the symbol )
- Either the following operating systems:  
Windows 98/me

## Driver Installation

Follow the steps below on installing the USB to parallel & serial cable software:

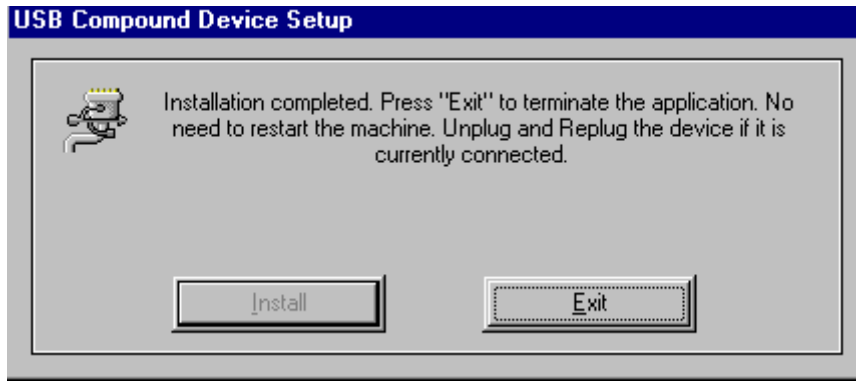
1. Power on your computer and make sure that the USB port is enabled and working properly.
2. Insert the installation CD into your CD-ROM drive. Open the CD. Double click **“SETUP”**.



3. Click **“Install”** to install the USB to Parallel & serial cables driver.

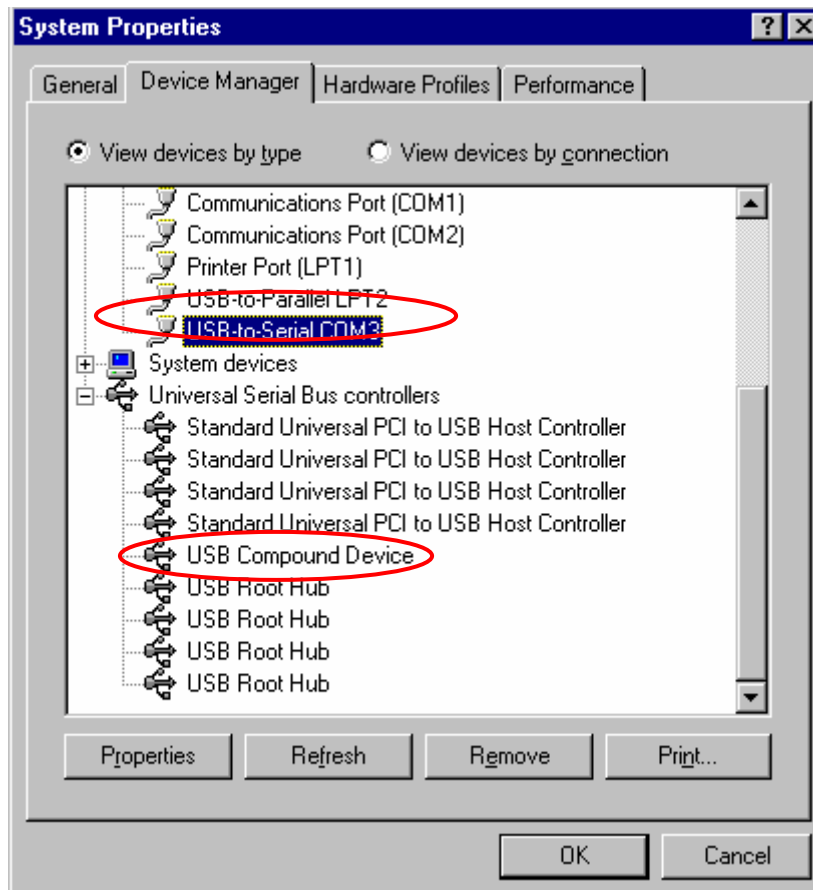


4. Once the Installation has completed, Click **“Exit”** to quite the installation program. If connected, disconnect and then reconnect the USB Parallel Printer Cable.



5. Once you plug the USB to Parallel&serial cable into your computer's USB port, Windows **"Add New Hardware Wizard"** will automatically install the driver.

6. The USB to parallel &serial cable has been successfully installed if you see the following new entries in Windows **"Device Manager"**.



## Setting Up the Printer Device

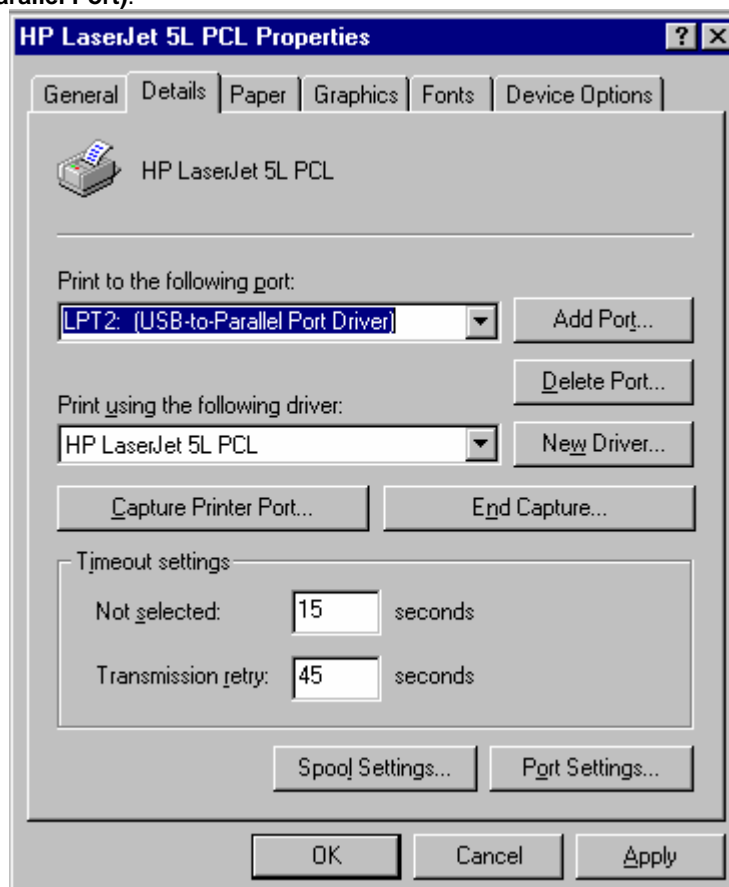
Follow the steps below on how to connect your printer to the USB port of your PC:

1. Turn off your printer. Plug the Centronics connector of USB to parallel &serial cable into your printer. If you have a parallel cable connected to it, remove the cable and replace it with the USB-Parallel&serial cable. Turn on the printer afterwards.

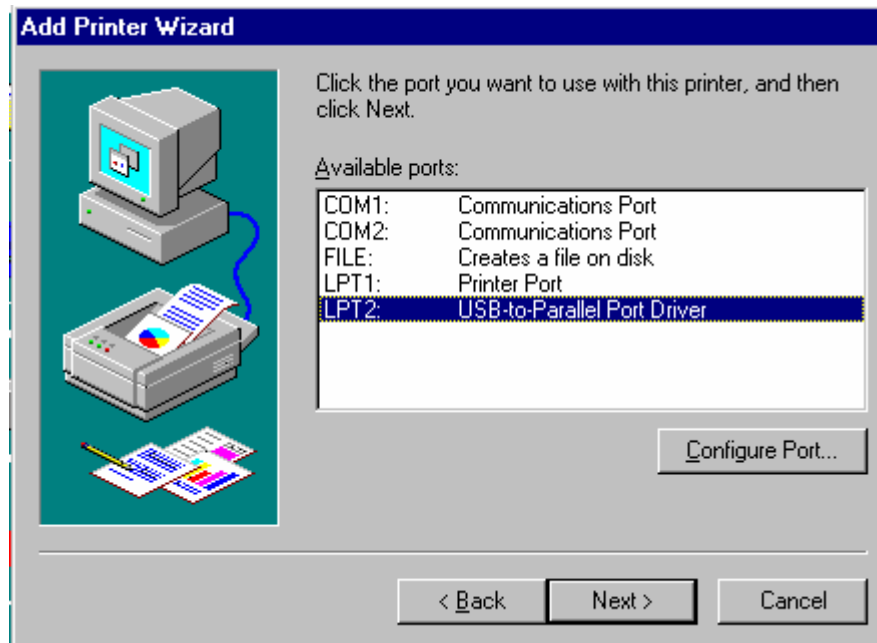
2. If you have already installed a printer device before, click Start, Settings, Printers. Right-click the default installed printer and click on Properties. The Properties dialog box of the installed printer will appear on your screen.



3. Click the Details folder tab and change the printer port to **LPT2: (USB to Parallel Port)**.



4. If you do not have a printer installed yet, click on Start, Settings, Printers, Add Printer. The **Add Printer Wizard** will start and assist you in installing a new printer device. Select the printer manufacturer and model name from the list provided by the wizard or use the printer driver diskette supplied with your printer.
5. When prompted which port the printer will use, click on **LPT2: USB to Parallel Port**



- 6 Follow the succeeding instructions to complete the installation and also run **Print Test Page** to see if it can print without problems.

### Uninstalling the Driver Program

If in any case you want to remove the USB-Parallel&serial cable driver program, you can uninstall it by following the steps below:

1. Unplug USB to parallel printer cable from your PC.
2. Run the **MosUnst.exe** program from the USB-Parallel &serial cable driver diskette and reboot the PC.