

# USB TO 2 \* RS232 cable

## Installation & User's Manual

### 1. Brief Introduction

The USB TO 2 \* RS232 Cable provides economical solution for RS232 serial device to connect the USB host computer , which can plug and play , hot-swapping, enable notebook computers to connect industrial control machine and other RS232 serial devices , and serial transmitting speed up to 230K , its transmission supports USB 1.1 as well as USB 2.0 .

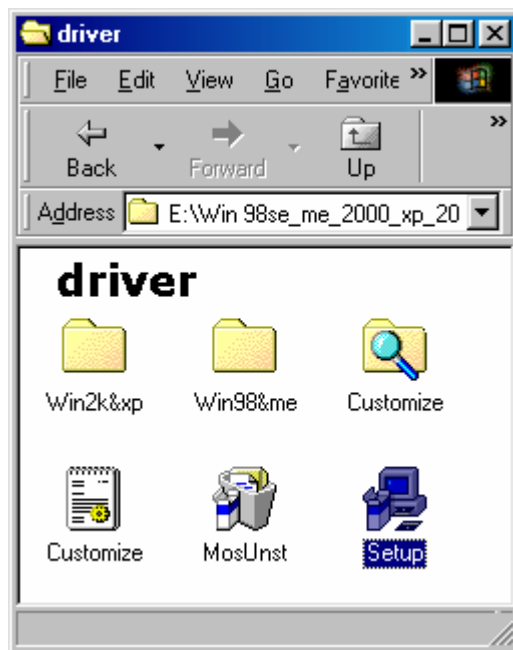
### 2. Specifications & Features

- 2.1 USB specification revision 1.1 compliant
- 2.2 Supports RS232 serial interface
- 2.3 Plug and play, no need to set up I/O protocol and IRQ.
- 2.4 Supports two separate RS232 serial interfaces
- 2.5 Supports Win98se/Me/2000/XP/2003 and Mac OS 10.X

### 3. Installing Driver

Note: Firstly please don't insert USB connectors of this product to the computer.  
Please install driver according to following steps:

3.1 Please open the driver of this product , refer to the below chart :



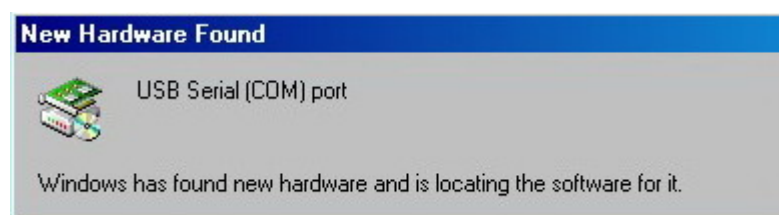
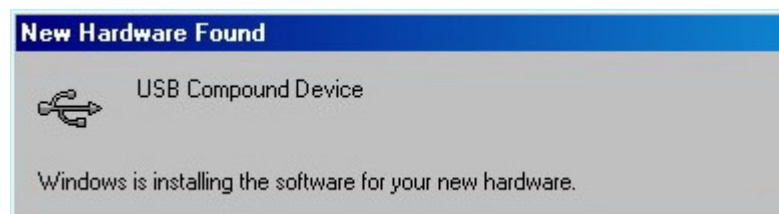
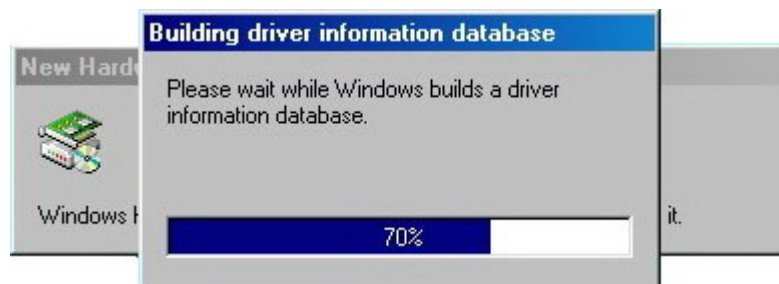
3.2 Double click "Setup.exe", it appears below interface, then click " Install" to install the driver .

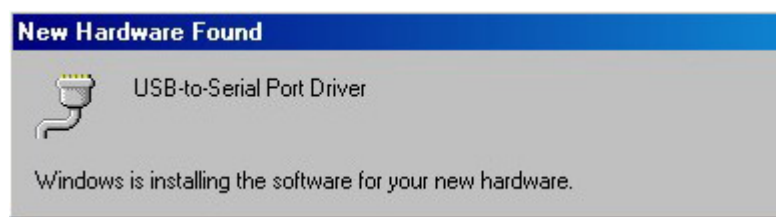
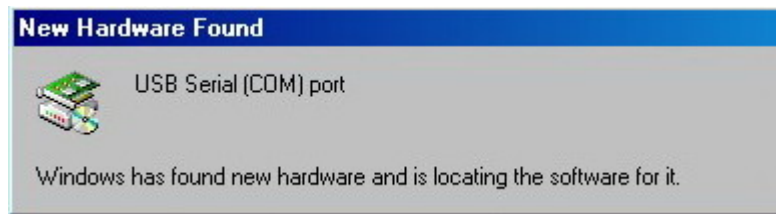
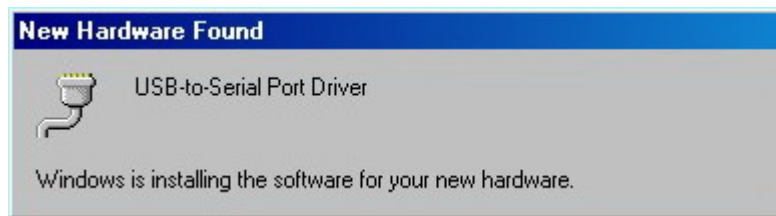


3.3 When Installation is completed, please click "Exit" to terminate the application.

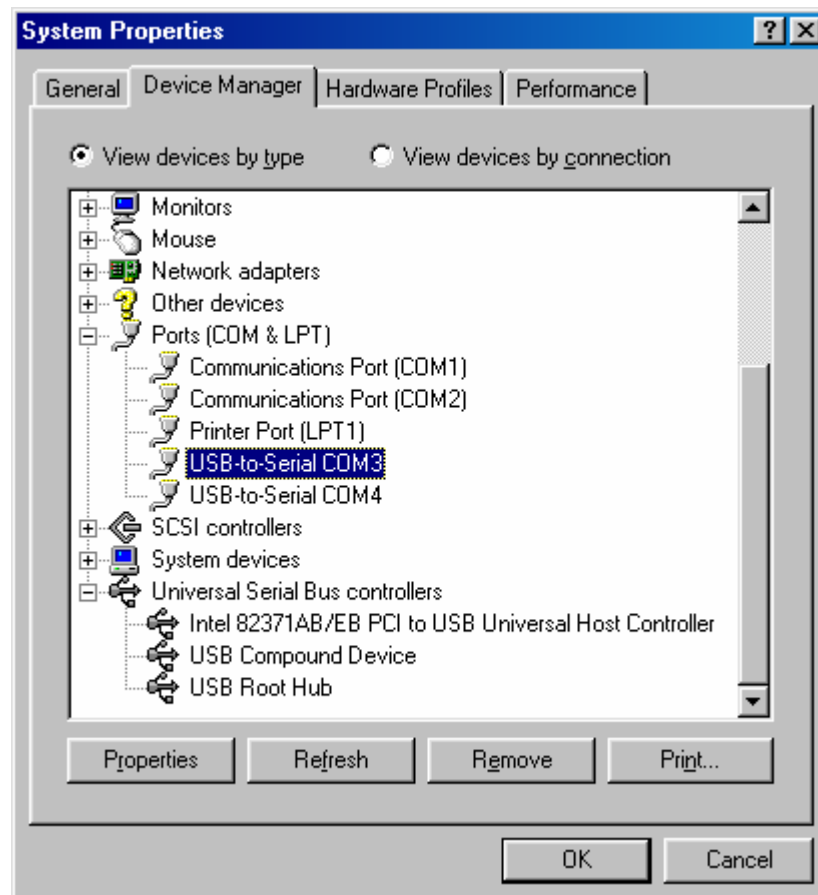


3.4 Please insert USB connectors of this product to computer, then system will identify it , search for it and install driver automatically , please refer to the below charts :



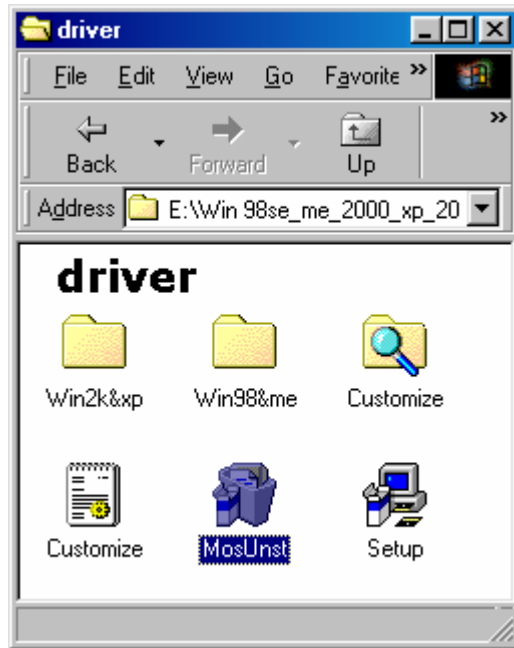


3.5 When installation is completed, you will see it in the menu of “ Device Manager” – “Ports :



#### 4. Uninstall driver

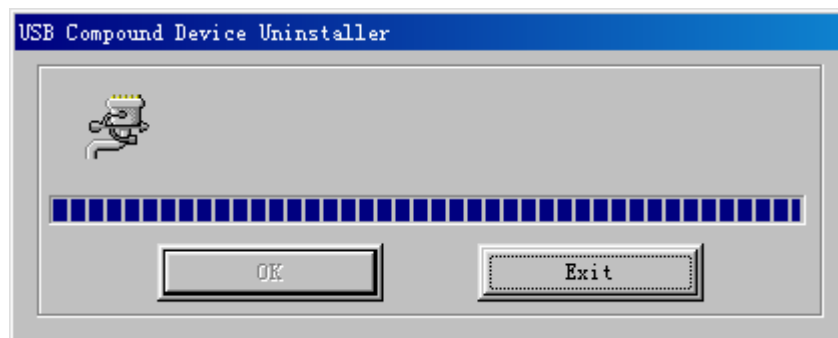
4.1 Open the driver of this product , please refer to the below chart :



4.2 Double click “MosUnst.exe” , it appears below interface, then click ”OK” to uninstall driver .

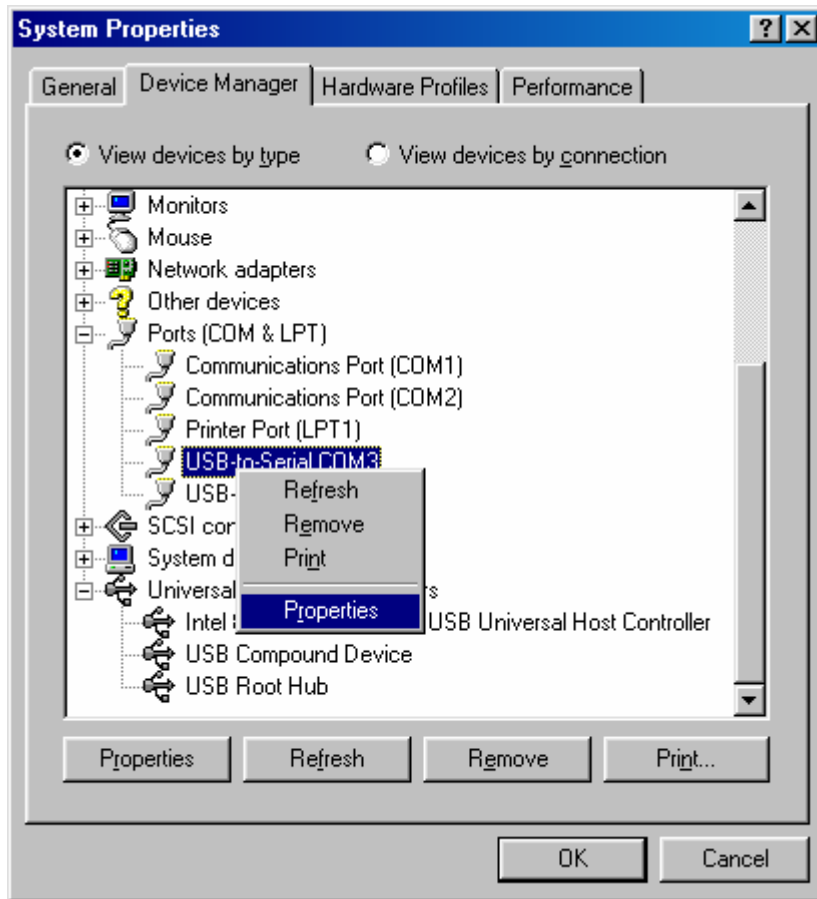


5.3 When Uninstall is completed, please click “Exit” to terminate the uninstall application.



## 5. Appendix

If you need , please find it in the menu of “USB-to-Serial”--- “Device Manager”,double click it ,then it appears “ Properties” and you can modify its relevant parameter .



5.1 When enter into the interface of USB-to-Serial Port Driver Properties, you can modify according to your need, then click "OK" , modification is completed.

