

usb to parallel printer cable User's Manual

Congratulations on your purchase of the usb to parallel printer cable adapter. This unique cable adapter allows you to attach your computer to most parallel printer device thru the USB port and get faster printing results.

Overview

The usb to parallel printer cable allows your PC to print to most parallel printer device connected through the USB port. Just plug the USB connector of the cable into the USB port of your PC and the other end into the centronics connector of the parallel printer . USB (Universal Serial Bus) interface provides up to 12Mbps data throughput, so printing is much faster compared when connected to standard parallel port (150kbs). The USB-Parallel cable also provides true plug-n-play and hot-plug capability – simply plug in the cable under the Windows operating system and the cable will be instantly detected.

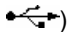
Features

The usb to parallel printer cable provides the following features:

- Single chip (ASIC) USB to Parallel communication
- Windows 98 and Windows Me Driver Support
- Universal Serial Bus Specification Rev. 1.1 compliant
- USB full speed communication and bus powered
- USB Printer Class Specification 1.0 compliant
- IEEE-1284 1994 (bi-directional parallel interface) specification compliant

System Requirements

Before you use the usb to parallel printer cable, make sure your computer is an IBM PC-compatible with the following minimum system requirements:

- Intel-compatible 486DX-66 MHz CPU or higher
- One standard 4-pin USB port (with the symbol )
- Either the following operating systems:
 - Windows 98

Driver Installation (win98/me/se)

Follow the steps below on installing the usb to parallel printer cable software:

1. Power on your computer and make sure that the USB port is enabled and working properly.
2. Plug in the USB-Parallel cable into the USB port and Windows will detect the **IEEE-1284** device and run the **Add New Hardware Wizard** to assist you in setting up the new device. Click Next to continue.
3. Insert the usb to parallel printer cable driver diskette into the floppy drive and click Next to continue. For Windows 98, click **Search for the best driver for your device** and click to search driver from the floppy disk drive.
4. Windows will detect the driver (**PARUPL.INF**) and shows the **USB-Parallel Bridge** device. Click Next to continue installation.



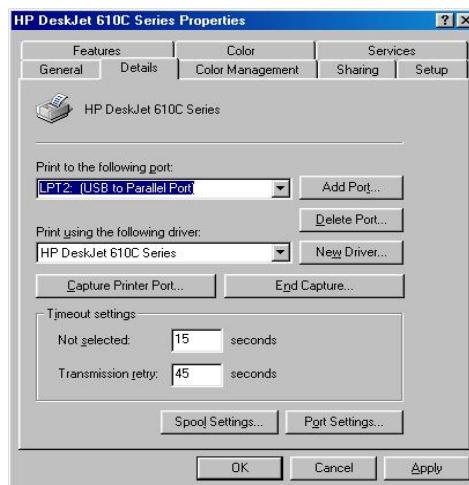
5. Click Next to continue and let Windows copy the needed files to your hard disk.
-

-
- When Windows finished installing the software required for the new **USB-Parallel Bridge** device, click Finish.

Setting Up the Printer Device

Follow the steps below on how to connect your printer to the USB port of your PC:

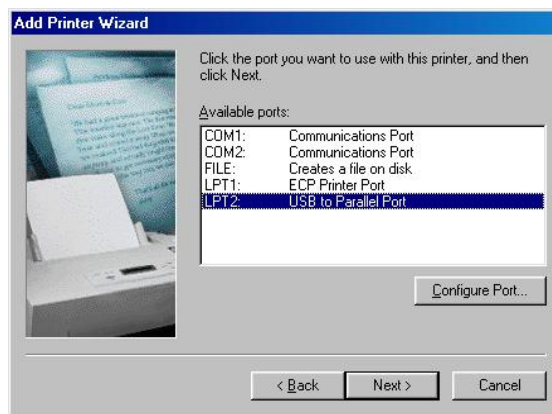
- Turn off your printer. Plug the centronics connector of usb to parallel printer cable into your printer. If you have a parallel cable connected to it, remove the cable and replace it with the USB-Parallel cable. Turn on the printer afterwards.
- Turn on your computer and plug in the USB connector of the usb to parallel printer cable into the USB port.
- If you have already installed a printer device before, click Start, Settings, Printers. Right-click the default installed printer and click on Properties. The Properties dialog box of the installed printer will appear on your screen.
- Click the Details folder tab and change the printer port to **LPT2: (USB to Parallel Port)**.



- If you do not have a printer installed yet, click on Start, Settings, Printers, Add Printer. The **Add Printer Wizard** will start and assist you in installing a new printer device. Select the printer manufacturer and model name from the list
-

provided by the wizard or use the printer driver diskette supplied with your printer.

6. When prompted which port the printer will use, click on **LPT2: USB to Parallel Port**.



7. Follow the succeeding instructions to complete the installation and also run **Print Test Page** to see if it can print without problems.

Uninstalling the Driver Program

If in any case you want to remove the USB-Parallel cable driver program, you can uninstall it by following the steps below:

1. Unplug usb to parallel printer cable from your PC.
 2. Run the **UNINST.EXE** program from the USB-Parallel cable driver diskette and reboot the PC.
-